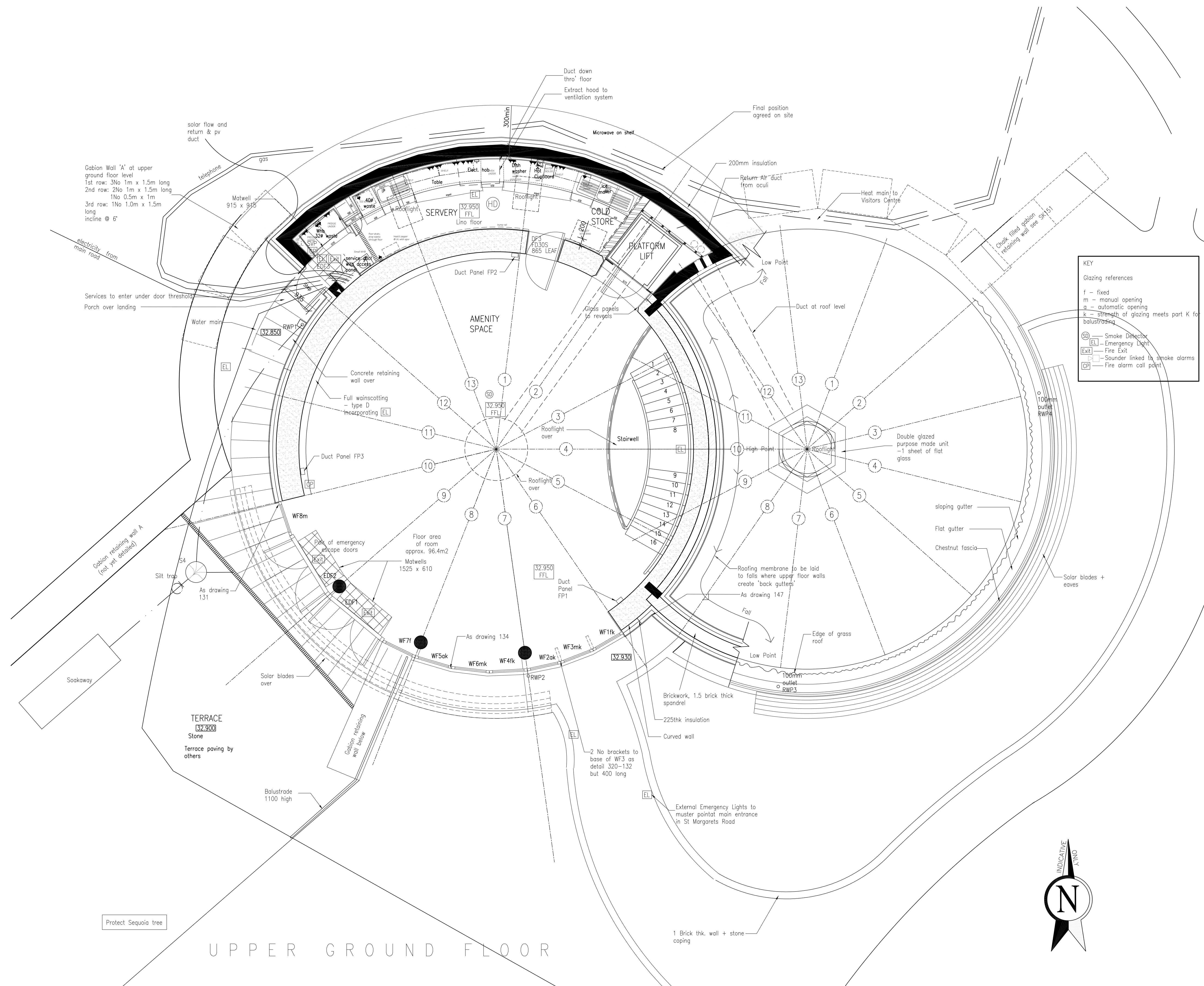


NOTES

This drawing is subject to copyright and must not be copied or otherwise reproduced without the express permission of Conker Conservation Ltd.

All dimensions to be checked on site and any discrepancies or omissions reported to the Contract Administrator

Do not scale from this drawing



KEY

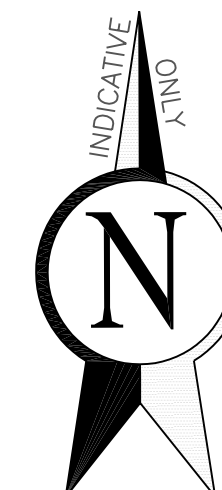
Glazing references
 f – fixed
 m – manual opening
 a – automatic opening
 k – strength of glazing meets part K for balustrading

Smoke Detector
 Emergency Light
 Fire Exit
 Sounder linked to smoke alarms
 Fire alarm call point

Rev E: 05/05/06 External stairs removed; servery, drainage, flooring amended; gabion A extended
 Rev D: 01/02/06 Additional annotation; general amendments
 Rev C: 14/12/05 Additional annotation; floor heights lowered
 Rev B: 25/10/05 Drainage amended; minor internal alterations
 Rev A: 22/01/05 Balcony removed, and other general amendments

REVISIONS

<p>CONKER CONSERVATION LIMITED Ecological Building Consultants and Designers</p>		
<p>CHARTERED BUILDING SURVEYORS 28, HIGHFIELD CLOSE CANTERBURY CT2 9DX TEL: 01227 764280 FAX: 01227 764709 Email: paul@conkerconstruction.co.uk</p>		
<p>Project Title: THE PINES CALYX EARTH BERMED OFFICE & AMENITY SPACE</p>		
<p>Client: ST MARGARET'S BAY TRUST PINES GARDEN</p>		
<p>Drawing Title: UPPER GROUND FLOOR</p>		
Scale:	1:50	Date: AUG 2005
Drawing Number:	296-102	E



UPPER GROUND FLOOR

Protect Sequoia tree